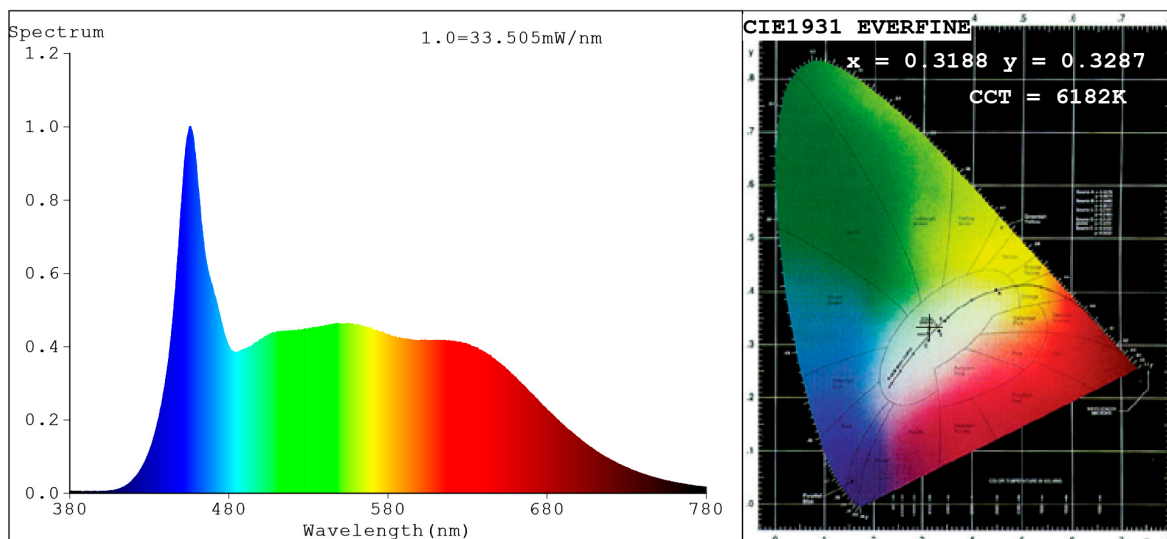


## Spectrum Test Report



### Color Parameters:

Chromaticity Coordinate:  $x=0.3188$   $y=0.3287$   $u'=0.2021$   $v'=0.4691$   
 $CCT=6182K$  ( $Duv=0.0000$ ) Dominant WL:  $\lambda_d = 487.6nm$  Purity=5.3%  
 Ratio: R=16.1% G=76.8% B=7.1%; Peak WL:  $\lambda_p = 455.4nm$  FWHM=28.0nm  
 Render Index:  $R_a=95.2$  CRI=94.3 TM30:  $R_f=91$   $R_g=100$   
 R1 =97 R2 =98 R3 =98 R4 =93 R5 =95 R6 =94 R7 =94  
 R8 =94 R9 =95 R10=97 R11=96 R12=73 R13=98 R14=100 R15=95

### Photo Parameters:

Flux = 1071 lm Eff. : 91.06 lm/W Fe = 3.976 W Scotopic: 2570.8 S/P: 2.3996

### Electrical parameters:

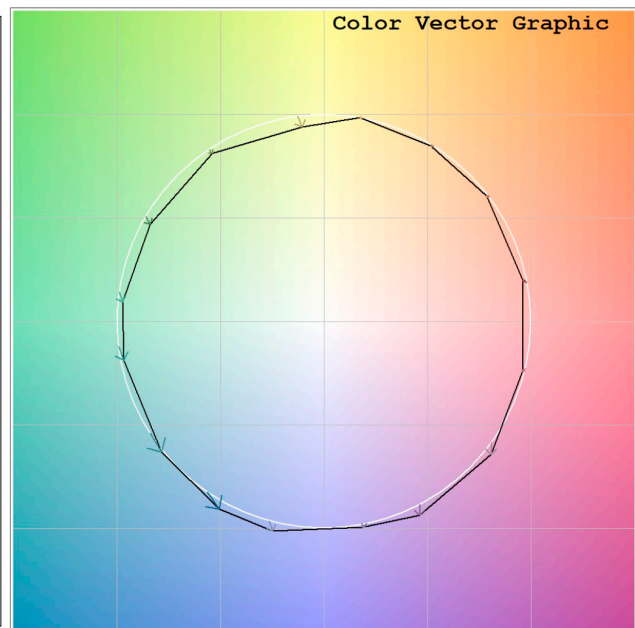
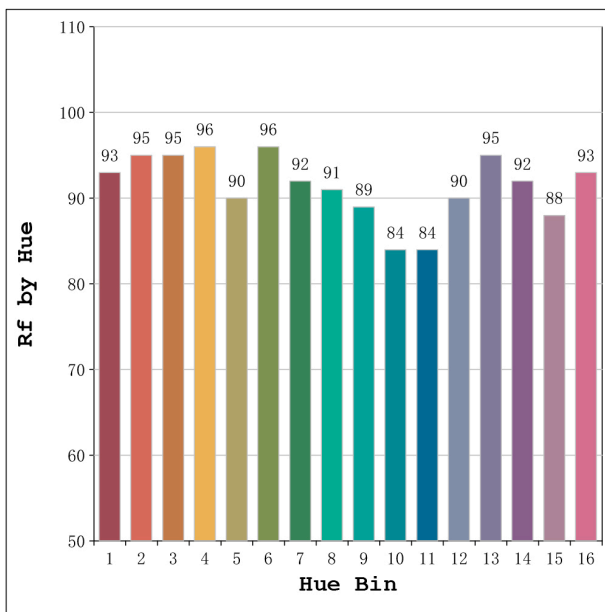
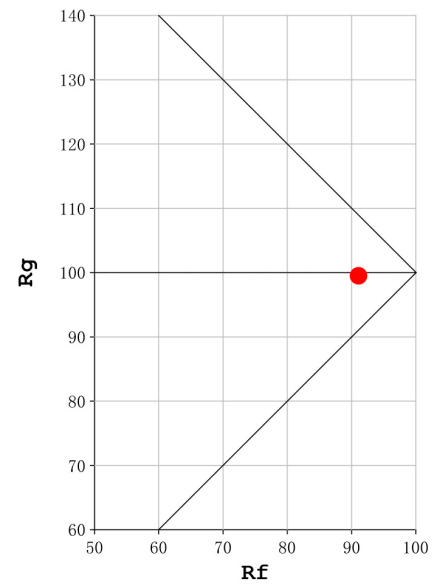
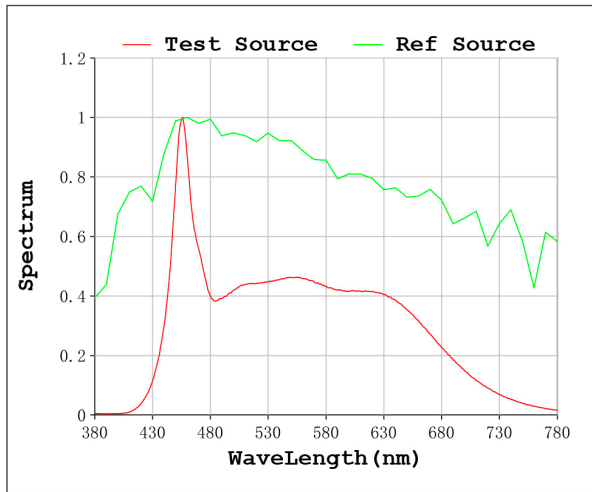
V = 11.998 V I = 0.9806 A P = 11.77 W PF = 1.000

Status: Integral T = 937 ms Ip = 51616 (79%)

Model: Ecoled Avila Pro 6000K  
 Tester: Sergio Carneros  
 Temperature: 25Deg  
 Manufacturer: Luz Negra S.L.

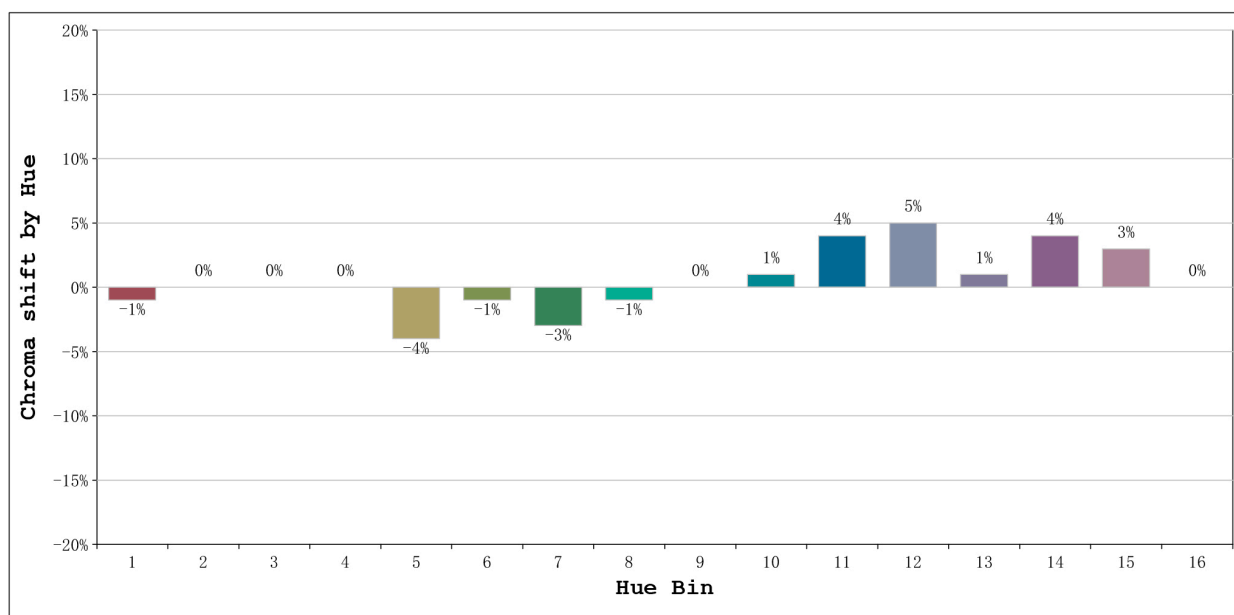
Number: 32.075  
 Date: 26-5-2021  
 Humidity: 57%  
 Remarks: 100cm de tira flexible

**Rf: 91**      **CCT: 6182 K**      **u': 0.2021**  
**Rg: 100**      **Duv: 0.0000**      **v': 0.4691**



Model:Ecoled Avila Pro 6000K  
 Tester:Sergio Carneros  
 Temperature:25Deg  
 Manufacturer:Luz Negra S.L.

Number: 32.075  
 Date:26-5-2021  
 Humidity:57%  
 Remarks:100cm de tira flexible



			Graphic shift(%)	
Hue Bin	Hue Angle	Rf	Chroma	Hue
1	0.0° - 22.5°	93	-1	1
2	22.5° - 45.0°	95	0	1
3	45.0° - 67.5°	95	0	1
4	67.5° - 90.0°	96	0	1
5	90.0° - 112.5°	90	-4	0
6	112.5° - 135.0°	96	-1	0
7	135.0° - 157.5°	92	-3	2
8	157.5° - 180.0°	91	-1	4
9	180.0° - 202.5°	89	0	7
10	202.5° - 225.0°	84	1	10
11	225.0° - 247.5°	84	4	9
12	247.5° - 270.0°	90	5	2
13	270.0° - 292.5°	95	1	-1
14	292.5° - 315.0°	92	4	-2
15	315.0° - 337.5°	88	3	-4
16	337.5° - 360.0°	93	0	-1

Model:Ecoled Avila Pro 6000K  
 Tester:Sergio Carneros  
 Temperature:25Deg  
 Manufacturer:Luz Negra S.L.

Number: 32.075  
 Date:26-5-2021  
 Humidity:57%  
 Remarks:100cm de tira flexible